

## FUND COMMENTARY

In March 2025, the fund recorded -1.97% return vs. benchmark of -1.97%.

## FEATURES OF FUND

### Investment Objective

The fund is designed to deliver performance of the FTSE Bursa Malaysia KLCI Index.

### Investment Strategy

The fund will invest at least 90% in the top 30 equities according to their proportion in the FTSE Bursa Malaysia KLCI Index. The remainder of the fund will be invested in cash and fixed deposits. This investment approach is passive.

### Target Market

Individuals seeking exposure to returns from equities where the fund follows performance in line with the market.

### Benchmark

FTSE Bursa Malaysia KLCI Index ([www.bursamalaysia.com](http://www.bursamalaysia.com)).

## FUND DETAILS

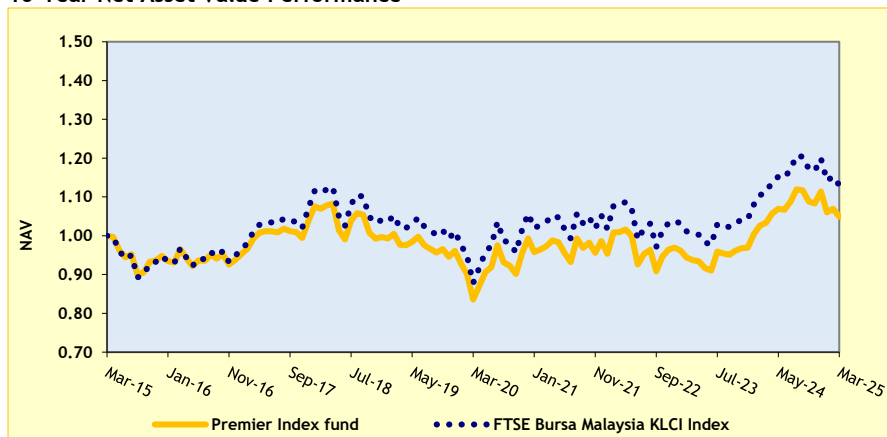
<b>Inception Date</b>	8 August 2001
<b>Fund Currency</b>	Ringgit Malaysia
<b>Fund Manager</b>	Etiqua Life Insurance Berhad
<b>Fund Size</b>	RM215.95 million
<b>Net Asset Value (NAV) per unit</b>	RM1.60
<b>Fund Management Fee</b>	1.25% p.a. of NAV
<b>Bloomberg Ticker</b>	MBLPIDX MK Equity
<b>Overall Risk Level</b>	5 (1=Low Risk to 5=High Risk)
<b>Basis of Unit Valuation</b>	The unit price is determined daily based on the value of the underlying assets of the fund, net of expenses, divided by the total number of units in that fund.
<b>Frequency of Unit Valuation</b>	Daily
<b>Other Charges, if any</b>	None
<b>Shariah Compliant</b>	No

## TOP 5 HOLDINGS

- 1) MALAYAN BANKING BERHAD
- 2) PUBLIC BANK BERHAD
- 3) TENAGA NASIONAL BERHAD
- 4) CIMB GROUP HOLDINGS BERHAD
- 5) GAMUDA BERHAD

## FUND PERFORMANCE

### 10-Year Net Asset Value Performance



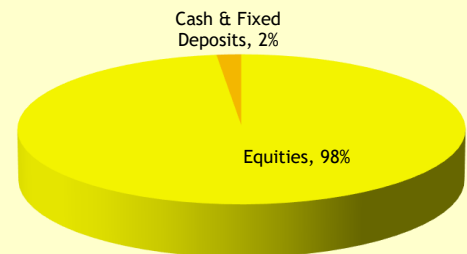
Source: Etiqa Life Insurance Berhad

### Historic Fund Performance (in %)

%	1 month	YTD	1 year	3 years	5 years	10 years	Annualised 10 years
<b>Fund</b>	-1.97	-5.84	1.53	3.91	25.49	4.87	0.48
<b>Benchmark</b>	-1.97	-5.79	1.66	4.77	28.70	8.33	0.80
<b>Variance</b>	0.00	-0.05	-0.13	-0.86	-3.21	-3.46	-0.32

Source: Etiqa Life Insurance Berhad

## ASSETS ALLOCATION



Source: Etiqa Life Insurance Berhad

### Highest and Lowest Net Asset Value per unit (in RM)

Year	Highest (RM)	Lowest (RM)
2025 (YTD)	1.69	1.56
2024	1.72	1.47
2023	1.49	1.38
2022	1.55	1.36
2021	1.53	1.41

## Exceptional Circumstances

- In exceptional circumstances, we reserve the right to suspend the creation or cancellation of units. In such an event, a notice for suspension will be published on our website, and would be communicated to the policyholders upon any request for top-up, switching, or withdrawal to or from the fund.
- At any time, we reserve the right to close any fund, or to transfer the investments to a new fund, subject to prior approval by the regulator. In such an event, we will provide 90 days prior written notification.

## RISK DISCLOSURE

The policyholders should consider the following potential risks when investing in a fund. Investors should be aware that by investing in the Fund, there is no guarantee of any returns. There is also no guarantee that investors will enjoy any capital appreciation or will not experience any loss of capital invested in the Fund.

- 1 **Market Risk** - The risk of losses in the value of a fund, due to factors that affect the overall performance of financial markets. These factors could be the current situation or future outlook, and could be both local and foreign. These factors could include the economy, politics, government bond yields, credit spreads on corporate bonds, country credit rating, stock market levels, foreign exchange rates, and commodity prices. The investment manager reduces the risk to the fund by purchasing price protection, investing in a wide range of asset classes or by increasing exposure to cash. The policyholder can reduce their exposure to market risk by choosing a fund with a higher proportion of assets in cash.
- 2 **Credit and Default Risk** - The risk of losses in the value of a fund invested in money market, bonds or debt, due to factors that delay or restructure a scheduled payment from the counterparty. These factors could include bankruptcy of the counterparty. The investment manager to the fund assesses the management of credit and default risk in selecting the target fund. The policyholder can reduce their exposure to credit risk by choosing funds with lower exposure to banks or issuers with a higher credit risk.
- 3 **Liquidity Risk** - The risk of losses in the value of a fund, due to factors that constrain the quick sale of an asset of the fund. These factors could include a lack of buyers in the market, or the availability of liquidity to the buyers. The investment manager reduces the risk to the fund by selecting cash or assets for which there are regular trades. The policyholder can reduce their exposure to liquidity risk by choosing a fund with higher exposure to cash or assets which are regularly traded.
- 4 **Concentration Risk** - The risk of losses in the value of a fund, due to an excessive exposure to a single or similar assets, or markets. The investment manager reduces the risk to the fund, by investing in a wide range of assets. The policyholder can reduce their exposure to concentration risk by choosing a fund holding a wide range of assets, or covering different asset classes, market sectors, and counterparties.
- 5 **Operational Risk** - The risk of losses in the value of a fund due to inadequate or failed processes, people and systems or external events. Some examples of operational incidents include:
  - misappropriation of investments, due to fraud, an illegal act, malicious intent, spite, or terrorism;
  - disruption or failure of IT systems and infrastructure, which may be used for monitoring, execution, and administration;
  - inaccurate calculations due to data quality or errors, methodology flaws, or miscalculations; and
  - inaccurate or incomplete controls.The investment manager reduces the risk by segregating the duties and functions of individuals; setting disaster recovery and business continuation processes; performing independent regular checks; and implementing third party vendor selection and ongoing assessment processes.

## IMPORTANT NOTES

- 1 This Fund Fact Sheet is for information purposes only and is not intended, nor should it be construed as an offer, recommendation or solicitation to enter into or conclude an insurance policy. It is not in any way or manner intended to be or should it be treated as giving you any form of advice. Prospective policyholders should perform their own evaluation of the suitability of the policy and the risks of the fund, relative to their needs, and should consider professional advice.
- 2 This Fund Fact Sheet should be read in conjunction with the Sales Illustration and Product Disclosure Sheet for the policy. Prospective policyholders should pay close attention to the benefits of the policy that depend on fund performance.
- 3 The risks disclosed above are not all risks which may be relevant to a specific prospective policyholder. The fund may be exposed to other risks from time to time.
- 4 The performance of the fund is tied to the performance of the assets held by the fund, and as described in this fund fact sheet.
- 5 Past performance is not an indication of future performance.
- 6 The fund performance is the return on assets of the fund, not the return on premiums paid, as premiums are subject to charges before investing in the fund, and the fund maybe subject to charges, which are specific to the insurance policy, and cashflow timing differences.
- 7 The performance is calculated based on the NAV per unit at the start and end of the measurement periods, computed as:  
$$\text{NAV return} = (\text{End Period NAV per Unit} / \text{Begin Period NAV per Unit}) - 1$$
- 8 Annualised performance is calculated based on the compounded return method.